



WEST MIDLANDS WOODTURNERS



November 2017 Newsletter

2017 Programme of meetings

Venue: Water Orton Primary School, unless otherwise stated.

19th November AGM and Hands On : Spirals
10th December [Mark Hancock](#) Demo and Christmas “buffet”

Annual General Meeting

The meeting will commence at 10.00 am on 19th November 2017

Members may wish to bring a (comfortable) chair as there is a limited number of chairs in the school hall.

Voting Rights: Rule 13.2 is in operation.

Life and Honorary members have the same voting rights as ordinary members, but Family and Junior categories of membership will have voting rights consistent with the right to vote in public and general elections. Other categories of membership will have voting rights determined by the Executive Committee, from time to time and in the interests of the Club.

Annual subscriptions for the 2017/8 year will be confirmed at the Annual General Meeting and are due immediately thereafter. Please bring your cheque books (or lots of cash!)

Woodturning blanks:

David Winter will be attending the meeting with his stock of blanks.

Programme of Meetings for 2018

Venue: Water Orton Primary School, unless otherwise stated.

21st January Hands On
18th February Demo: [Emma Cook](#)
18th March Hands On
15th April Demo: [Les Thorne](#)
20th May Hands On
10th June (not 3rd Sunday) Demo: [Rod Page](#)
15th July Hands On
19th August Demo: [Jason Breach](#)
16th September Hands On
21st October Demo: [Paul Jones](#)
18th November Hands On & AGM
16th December Demo: [Steve Heeley](#) & Christmas “buffet”

Demonstration days start at 9.15 am and conclude around 4.30 pm.

(Setting up from 8.30 am)

Hands On days start at 9.30 am and conclude about 4.00 pm.

Don't forget your lunch and a mug!

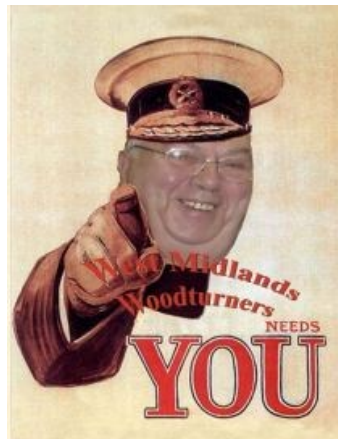
WMWT Committee

Chairman	Cliff Lane	Chair@wmwoodturners.org.uk
Vice Chair	Wolfgang Schulze -Zachau	Vice@wmwoodturners.org.uk
Secretary & Director	John Hooper	Secretary@wmwoodturners.org.uk
Treasurer	Les Saunby	Treasurer@wmwoodturners.org.uk
Programme and Events Manager	Malcolm Thorpe	Events@wmwoodturners.org.uk
Equipment Manager	Steve Simmons	Equipment@wmwoodturners.org.uk
Membership Secretary	Helen Lees	Membership@wmwoodturners.org.uk
Newsletter Editor	John Hooper	Secretary@wmwoodturners.org.uk

Contents

Page No	Item
1	AGM notice and voting rights
1	2018 Demonstrator programme
3	Chairman's Comments
4&5	Review f David Atkinson's Demonstration
6	Chairman's Challenge Results for October
7	Display Table for October
7	Chairman's Challenge for November
8	Do you have 4 years to spare?

Remember these photo's?



Thank You

A special thank you to our fellow member Ted Trowsdale, who donated a load of wood to the club. Ted was unable to attend the last meeting so I brought the timber on his behalf and pretty well all of it was snapped up by members who will put it to very good use, I'm sure. Donations were generous and all proceeds went into club funds. Thanks again, Ted.

Phil Stevenson

Chairman's Comments

You have probably seen in recent newsletters that Article 10.2.1 will apply at the upcoming AGM. For those of you that don't know, the club constitution (including Article 10.2.1) was voted in at the November 2014 AGM. The rule says that committee members can be re-elected for a maximum of a further two years and must stand down at the end of their third consecutive year. I was in favour of this rule then and still feel that it is in the overall best interest of the club to bring new blood onto the committee.

I have been trying to think back to some of the highs and lows over the last 4 years. I am pleased to say that, although there have been many highs, I could not think of any lows. My first meeting as Chairman could have been a low. The day was a demonstration, we arrived early, set up the room, the lathe was plugged in and ready, the only thing missing was the demonstrator. After looking at the options we put a programme together with some members stepping in and volunteering to do short demos. What could have been a disaster was turned into an enjoyable day. I knew then that with such a positive attitude within the club we could cope with any eventuality.

The club attended the first Newark Woodworking and Power Tool Show, and after a busy and enjoyable couple of days, three of us accepted an invitation from Ted Gill and his wife to join them in a coffee in their new camper van. Refreshed we left to get in our cars and start the journey home. The only slight problem was that some bright spark had decided to lock the car park gates and we could not get out. For some reason everyone thought that this was funny when they heard about it.

Some of the high spots for me have been, our success at Daventry, seeing membership numbers increase, getting more publicity for WMWT, having a good programme of outside events and seeing us get more professional in our approach to these.

I have written 46 Chairman's Comments and found around 60 jokes to put in the newsletter, but must have read through hundreds to find these. I even got to be an auctioneer after Jerry Marlow's demonstration.

Although I will be standing down I am not going away and will still be involved in the club. I also intend to keep asking/pestering you all to donate pieces to the Sales table and Pick a Peg.

It's been a privilege being able to play a small part in the growth of the club and I know that, provided you give the incoming Chairman and committee the same level of support and enthusiasm that you have given me, the club will continue to grow and achieve even more success.

If I had to give any words of wisdom to the incoming chairman it would be these from Chinese philosopher Lao Tzu – 604bc to 531bc

Leadership is the ability to hide your panic from others.

Cliff.

A pensioner drove his brand new Mercedes to 100 mph, looking in his rear view mirror, he saw a police car behind him. He floored it to 140, then 150, ... then 155! Suddenly he thought, I'm too old for this nonsense. So he pulled over to the side of the road and waited for the police car to catch up with him.

The officer walked up to him, looked at his watch and said, Sir, my shift ends in ten minutes. Today is Friday and I'm taking off for the weekend with my family. If you can give me a good reason that I've never heard before, why you were speeding... I'll let you go."

The man looked very seriously at the police man, and replied: "years ago, my wife ran off with a policeman, when I saw you in my mirror I thought you were bringing her back!!!"

The officer left saying "Have a good day, Sir "...

Review of Dave Atkinson's Demo

By Malcolm Thorpe

Dave started the day off turning an ogee bowl from a Horse Chestnut blank with some burr figuring and a lot of woodworm. The blank was mounted on a screw chuck and straight away he started forming the ogee curve using a pull cut. As he said truing up the outside diameter of the blank is hard work and not necessary when it is easier to remove timber with the pull cut. Dave explained that he used the whole of his body to make the cut, holding the tool steady and pivoting his body.



A spigot was made with a parting tool with a small undercut to suit his chuck jaws. The chucking point was to be part of the foot but the poor quality of the blank forced him to change his mind later. Dave used a long grind gouge for the pull cut and the same tool as a shear scraper to finalise the form. The blank was then mounted on the spigot and the outside diameter and rim thickness finish turned.



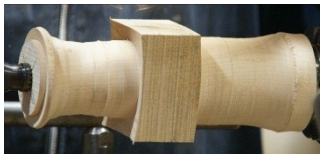
He started cutting the bowl with a long grind gouge keeping much of the centre wood intact to reduce vibration. Then changing to a traditional grind gouge with a 75 degree bevel to finish the final shape, leaving a wide rim. The bowl was given to the club to finish off for the raffle.



The second project was a tall spherical box with a square curved flange and a contrasting finial made from Sycamore and Indian Rosewood. Dave had several previous attempts with slightly different shapes and he did admit that it would be better to make a set of templates. He drew the design on the block to show the general idea.



The block was then mounted between centres and each end turned round with a chucking point, but leaving the centre square. The block was mounted in the chuck and a cylinder turned to the diameter of what would be the top.



Dave then started to shape the top curved surface of the square flange. This proved difficult as there was a hard spot in the grain causing the tool to jump. Sycamore is usually a well-tempered timber - one reason demonstrators use it.



The top was parted off leaving a large witness diameter due to the wings of the curved flange. Most of this was turned off and the bowl shape turned out leaving a gap for the wall thickness. Our demonstrators are usually professionals who rarely put a foot wrong, but it was probably more instructive to see how the Chairman of the AWGB runs into the same problems as we all do!



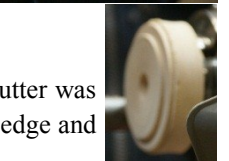
Using the witness as a guide, a register half the thickness of the flange was turned with a parting tool. The final shape of the hemisphere was achieved using a round nosed scraper. The lower part of the box was turned mainly using his left side and he explained how useful it is to turn left handed. The base was partially finished, while in the chuck, with an under cut, then parted off.



Dave then spent quite a lot of time making a jam chuck for the small register. The jam chuck held and using light cuts he finished the base off. I am sure no one in the audience would have attempted this. The waste left in the chuck was drilled through for later in the process and the top part put in the chuck.



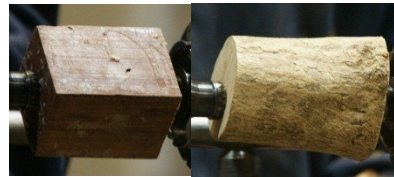
The mini bowl was cut with the long grind bowl gouge (a carbide cutter was tried but found to be blunt). A small parallel register was put on the edge and the bowl and the hemisphere blended to it with a round nosed scraper. A hole for the finial was drilled in the centre and the outer shape partly turned then parted off. The reason for the register became apparent as Dave made yet another jam chuck. Using the inside of the half sphere for a jam chuck does run the risk of splitting but it does mean that whole surface is available for finishing. The reason for previously drilling a hole in the jam chuck was now



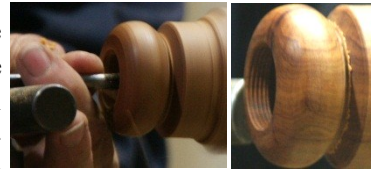
explained as a way of ejecting a piece that was too well jammed. Drilling the hole through the top does give a guide to wall thickness but it forced the making of a small drop finial along with the normal finial. The finials were made from Indian Rosewood using the long grind gouge and a skew chisel to refine the corners.



The next project was a threaded acorn box. The top was made from Tambootie and the base from English Box, both dense hard woods ideal for threading, having a slightly oily component. His advice was to start hand chasing with a 20 threads per inch (tpi) chasers with a speed of around 400 rpm.



A chucking point was turned on to the Tambootie and then mounted onto the scroll chuck. The bore for the internal thread was made with the bowl gouge and the back of the threaded portion was relieved with a swan necked scraper. A small box scraper refined the hole with a slight inward taper (this apparently helped to produce a parallel thread). Finally a small 60 degree chamfer was added to the entrance of the hole (essential).



Dave favours the use of a Bill Jones type arm rest with the tool rest set parallel to the lathe axis. The chaser was set at an angle of 45 degrees and an anti-clockwise circular motion set up, just touching the wood to start with. The object is to let the chaser control the movement when it has made contact with the wood. The chaser is then gradually brought in line with the lathe axis, using the arm rest to pull it in.



The English Box was mounted into the chuck and turned down to a finished outside diameter with a small shoulder formed for the outside diameter of the thread. This diameter was gauged by eye and probably a little large to start with. A small relief was made with the long point of a skew chisel and the small chamfer on the front. The same circular motion, this time clockwise, was started at 45 degrees until the chaser caught the thread. The chaser was gradually rotated until the thread was parallel, using the top as a

gauge to achieve a good fit. The skill here is not to allow the chaser to hit the shoulder and it would pay when learning the technique to have a large undercut or no shoulder. A question was asked about left-hand threads and Dave demonstrated this was just down to having the opposite circular motion, the internal thread being more difficult having to start by coming out of the bore.

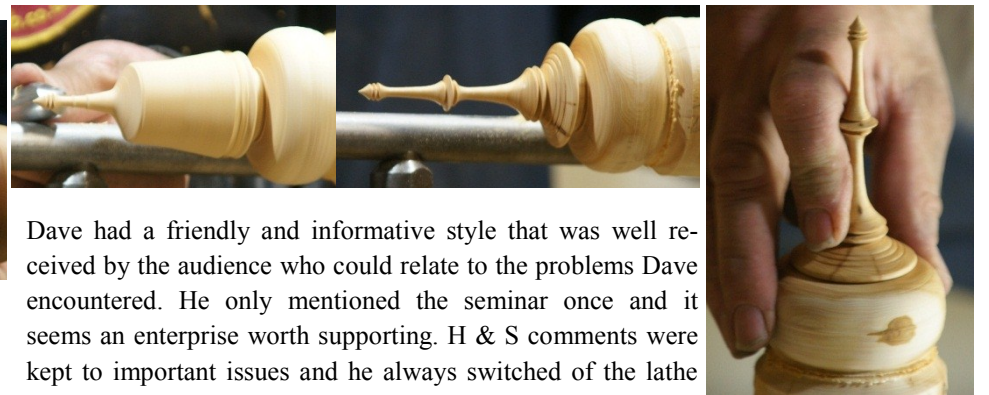


Left-hand threads are important in engineering (my ornamental lathe has six) but the main use in wood turning is for puzzles.

The blank was bored out to form a box and after making a jam thread, it was finish turned. The top was returned to the lathe and the top shaped. Earlier, Dave had said he did not understand negative rake scrapers but he now used an oval skew blade as a negative rake scraper on the end grain of the Tambootie. A stalk was formed onto the top and it was partially textured.



The final project was a yew box with a finial top which was rather rushed and used the same methods already demonstrated.



Dave had a friendly and informative style that was well received by the audience who could relate to the problems Dave encountered. He only mentioned the seminar once and it seems an enterprise worth supporting. H & S comments were kept to important issues and he always switched off the lathe before adjusting the tool rest, though perhaps not waiting for it to stop!

Chairman's Challenge Results: *October 2017*

Novice Group: Two Flowers (3 entries)

1st Place: Chris Jones



2nd Place: Mary Dunne



3rd Place: Peter Blakey



Intermediate Group: Off Centre Candlestick (3 entries)

1st Place: Malcolm Edwards



2nd Place: Darren Smith



3rd Place: Graham Hunt



Advanced Group: Small Hat (2 entries)

1st Place: Keith Lanchester



2nd Place: Malcolm Thorpe



3rd Place: -

Display Table: *October 2017*



Chairman's Challenge—November 2017

Novice Group:

Candlestick



Intermediate Group:

Discus Bowl

(Photo: Bowl by Don White)



Advanced Group:

Bowl with 4 different types of fruit (Cherries and grapes count as one piece)

(Photo: Bowl and fruit by JLWoodturning)



Chinese Sculptor Spends 4 Years Sculpting World's Longest Wooden Masterpiece.



Forever alone on [FUNsubstance.com](https://www.funsubstance.com)

