



West Midlands Woodturners

Wood Turning and Wood Art

January 2023 Newsletter

Programme of meetings 2023

22 Jan	Hands On	Off-centre turning
19 Feb	Demo	Rick Dobney
26 March	Hands On	Goblets and captive rings
16 April	Demo	Les Thorne
21 May	Hands On	Box turning and threaded lids
25 June	Demo	Martin Saban-Smith
16 July	Hands On	Work holding and jam chucks
20 Aug	Demo	Mick Hanbury
17 Oct	Hands On	Christmas ornaments
15 Oct	Demo	Margaret Garrard
19 Nov	AGM and Hands On	Colour and stains
17 Dec	Demo	Rob Till

Demonstration Days: Start at 9.15 and conclude about 4.30pm

Hands-on days start at 9.30 and conclude around 4pm.

Venue: Kingsbury Sports and Community Centre, unless otherwise stated

Fees are now due

If you have not already paid your annual fees, please can you do so either by making a Bank Transfer to the club's bank account, or by bringing your cheque book or credit/debit card to the next meeting.

The annual fee was agreed at the AGM as £90 plus the £18 AWGB subscription (if you don't pay this via another club).

If you want to do a Bank Transfer the details you need are:

Account Name: West Midlands Woodturners

Sort code: 77-31-11

Account No 28031960

Chris Jones, Honorary Treasurer

Change of meeting date

Due to a double booking issue, the meeting in January is now to be held on

Sunday 22nd January 2023.

West Midlands Woodturners is a "not for profit" company limited by guarantee.

Registered in England and Wales. Registration No: 9419165

WMWT Committee - following elections at the AGM

Contents

Chairman	Keith Lanchester	Chair@wmwoodturners.org.uk
Vice Chair	Vacant	Vice@wmwoodturners.org.uk
Directors	John Hooper Chris Jones Rob Huxley	john@hooper25.plus.com
Secretary Deputy Secretary	Joe Rollings Peter Flint	Secretary@wmwoodturners.org.uk
Treasurer	Chris Jones	Treasurer@wmwoodturners.org.uk
Deputy Treasurer	vacant	
Programme and Events Manager	Cliff Lane	Events@wmwoodturners.org.uk
Equipment Man- ager	Malcolm Ed- wards	Equipment@wmwoodturners.org.uk
Membership Sec- retary	David Campbell	Member- ship@wmwoodturners.org.uk
Newsletter Editor	Mary Dunne	Editor@wmwoodturners.org.uk

Page No

3	Chairman's comments and 2022 winners
4	Chairman's Challenge for 2023
5	December display table
6 - 9	Review of Steve Heeley demonstration
10—11	For Sale: 2 lathes, a Printer and some recently felled holly; Acknowledgments

Some riddles (via Chris Jones) to get your brains working in the New Year....

1. What has a head and a tail, but no body?
2. What is always in front of you but can't be seen?
3. What goes up but never comes down?
4. What has words but never speaks?
5. What question can you never answer "yes" to?
6. What runs all around a backyard, yet never moves?
7. What has many teeth, but can't bite?
8. What is it that has a bottom at the top of them?
9. What can you break even if you never pick it up or touch
10. What has hands but cannot clap?

Chairman's Comments:

I hope you all had a good Christmas and Santa brought you all the woodturning tools that were on your wish lists. New Year will also have passed by the time you read this so let me wish you all belated New year greetings.

December's meeting saw a lower attendance than usual, possibly due to the cold weather but also the threat of snow during the day which fortunately for us never materialised. Steve Heeley's demo was very good and you can read more in the write-up elsewhere in the newsletter so I won't go into detail here. Thank you Steve for yet another great demo. We also had the largest raffle of the year as I had secured some items from Chestnut Products (Thank you, Terry) and along with a donated coffee machine raised the sum of £88 for club funds. Thank you to everyone who bought tickets. Finally thanks must go to Cliff and the team in the kitchen who kept us supplied with hot sausage rolls and mince pies which were very gratefully consumed!

Congratulations to Chris Chambers, Kris Cietak and Darren Smith for winning the three categories in the Chairman's challenge. It would be nice to see a few more names entering next year. The list of items for 2023 was in last month's newsletter (repeated in this edition) and is also on the club's website. Also congratulations to Malcolm Thorpe for being named club member of the year. Well done, Malcolm.

The theme for January's 'Hands on' day is 'Off centre turning' and the club's lathes will all be in use with various projects for you to watch or have a go at or if you have any projects or tools you need help with, bring them along and ask one of the club members for help.

Finally a reminder that January's meeting is Sunday the 22nd due to a double booking of the hall, but that does give you an extra week to complete your entry for the Chairman's Challenge!

Hope you are all reinvigorated and looking forward to the year ahead, Keith.

CONGRATULATIONS!

**TO THE WINNERS OF THE CHAIRMAN'S
CHALLENGE 2022**

NOVICE: CHRIS CHAMBERS

INTERMEDIATE: KRIS CIETAK

ADVANCED/ARTISTIC: DARREN SMITH

**GRAHAM LOVATT TROPHY FOR CLUB MEM-
BER OF THE YEAR: MALCOLM THORPE**

NEXT YEAR IT COULD BE YOU!

WMWT Chairman's Challenge 2023

Month	Novice	Intermediate	Advanced (artistic)
Jan	Mushroom	Caddy spoon	Pair of goblets with pierced decoration
Feb	Bud Vase	Small hollow form	Hollow form with lid
Mar	Apple or Pear	Bowl with three pieces of fruit	Bowl with five pieces of fruit
April	Hedgehog	Cat	Animal for child's present
May	Bowl approx. 100mm in diameter	Bowl 150mm with incised decoration	Bowl with decoration
June	Spinning top	Ring stand	Toy with moving parts
July	Goblet max 100mm height	Decorative goblet max height 150mm	Drinking vessel for a party
August	Mouse	Decorated bracelet	Decorated string/yarn box
September	Christmas tree	Hanging Christmas decoration	Christmas decoration
October	Egg cup	42mm diameter egg and egg cup	Double egg cup and eggs
November	Platter 100-150mm diameter	Decorated platter 150-200mm diameter	Platter with incised and colour decoration
December	No competition		

Note from Peter Hockley:

The subjects in the Novice challenge have been chosen to highlight basic skills on subjects of basic design to enable the turner to improve through the development of these skills. The subjects in the Intermediate class are intended to take the above skills and continue to improve them whilst considering the design and function of the piece.

The Advanced turners are considered to have all or most of these skills so the subject is open to interpretation and is expected to be a "statement piece" requiring all these skills plus some artistic merit.

DECEMBER DISPLAY TABLE



Dave Hobbs



Joe Rollings



Joe Rollings



Joe Rollings



Peter Hockley



Malcolm Thorpe



Ted Gill



Peter Hockley

Review of Steve Heeley's December demonstration written by Joe Rollings

Steve made 3 projects for his demonstration, the first being the show-piece which naturally has a more in depth review.

Project 1 - Textured Candle Stick

Base Material - Olive Ash

Spindle Material - Ash

Base

Steve mounted the base blank to the lathe using a screw chuck further supported by a revolving centre. The speed was set moderately high and the blank was roughed to a round using a long grind bowl gouge, removing approximately 1/8" in each pass before finishing with a planing cut



using the tip of the gouge. Steve explained this was his preference over using a scraping cut with the wings. Steve further explained and advised "keep the speed fast (as much as you are comfortable with) and the tools sharp".

The blank was then reversed and remounted to the chuck and lightly trued up again using the tip of the gouge explaining this provided greater control and a much finer removal of material. The speed was reduced before driving a 30mm Forstner bit through the centre to approximately 30mm depth. Then Steve marked out with a pencil a recess where the

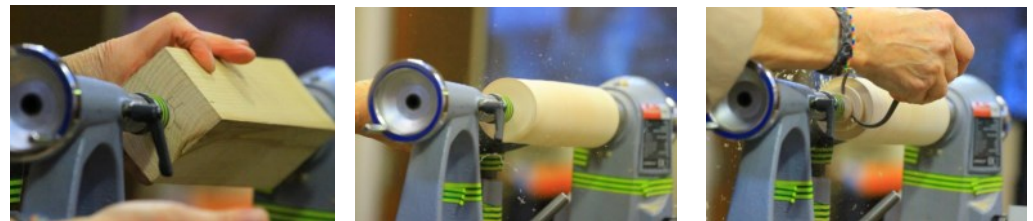
base of the candle stick shaft would locate thus creating a seamless flow of material once assembled.

The outside edges of the base were then profiled and shaped using a 3/8" spindle gouge with a standard grind creating a simple stepped shape with a series of coves and beads formed advising the audience to always work from the highest point to the lowest and to cut outwards not inwards.

The piece was sealed then burnished using the shavings before being dressed with stick wax and buffed to a shine.

Spindle

The centres of the spindle were marked out by drawing a line between the four corners of the square section both ends. The piece was then held between a four prong drive and a revolving centre. Steve then explained the four safety locking points of a lathe before adjusting the tool rest and speed which was set high before roughing to a round using a spindle roughing gouge.



The two ends were then trued up using a thin parting tool before creating a tenon to fit inside of the base with a slight undercut to the shoulder. Steve also at this point added some 'v's to the tenon explaining that this provided somewhere for the glue to sit and spread / anchor to during assembly before removing from the lathe.

The base piece was remounted and held using the chuck with the spindle now in situ supported by the revolving centre allowing the project to be finished as one piece. Waste material was then removed using a roughing gouge and skew chisel before a series of beads and coves and a large tapered section on the bottom third (which would later become textured) using the spindle gouge. Steve advised that for the coves you should always start at the centre and scoop outwards using a push cut bevel rubbing technique to achieve the final planing cut before finishing with 320 grit abrasive and then sealing and coating with a hard wax and buffing. Steve also advised the audience that to achieve the best coves, a standard grind spindle gouge is his preference.



Texturing

Steve advised that for this project, the tapered section which was on the bottom third of the spindle would be textured using a coarse cutting wheel mounted in the Sorby Texturing tool. The lathe was turned on at a moderate speed and the texturing tool held against the tool rest at 90 degrees. Steve then ran the tool over the section three times before using an in-and-out stabbing motion to break up some of the lines and refine the texture.



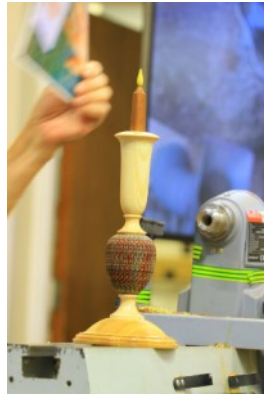
The surface was then painted with a red acrylic before being dried with Cliff's Hairdryer ahead of adding some black acrylic spray which was again dried—followed by a light sanding to allow a little of the wood back through the paint for the finished effect. The unpainted sections were then finished using a hard wax which Steve advised was a simple mix of 50:50 Beeswax and Carnauba which yields a high gloss finish.



Candle Piece and Flame

The candle body was turned out of a small square Sapele spindle into a simple round with a shoulder for mounting and the flame was made from a small square section of box wood to replicate the flame colour against the darker body of the Sapele.





Project 2 - Meat Tenderiser

Steve mounted a square section of beech between the chuck and a revolving centre before roughing it to round with a spindle roughing gouge before making a planing cut using a 3/8" skew. Steve explained that he uses the 3/8" skew over all other skew shapes and sizes as there is far less chance of a serious catch.

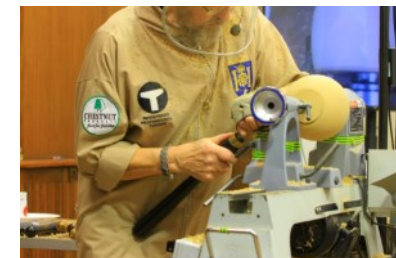


A series of 8 V-Cuts were made using the skew which were then expanded and opened up before proceeding to rough out the shape of the handle using the roughing gouge then finishing the form using a 3/8" spindle gouge.

The piece was then sanded to 320 grit before a layer of hard wax was applied and buffed with tissue to shine.

Project 3 - Mortar (Bowl) and Pestle (Grinding Stick)

Steve started by making the base for the Mortar using a piece of Oak square section. This was mounted in the screw chuck with a revolving centre to support. Steve explained that you could do this without the revolving centre but it is always best for safety to use it and also sometimes you can get a wobble when using a screw chuck.



The blank was roughed and trued using a 1/2' bowl gouge with a long grind. Next, the piece was shaped using the gouge, performing bevel rubbing cuts working from the inside to out. Then a tenon was cut so that the work could be reversed and re-mounted onto the chuck.



The workpiece was then re mounted before hollowing out the piece using a 3/8" bowl gouge with the long grind, working from the outside to inside before changing to the standard grind to finish the form. Steve explained a better form could be achieved with less risk of a catch. Before starting the lathe, Steve re-iterated the safety locking points on the machine and advised the members that safety first should always be priority.

The piece was then planed using a negative rake round nosed scraper and sanded again to 320 grit using a sanding arbour on a power drill to help with any end grain tear out and finished and buffed using hard wax.



using the 3/8" spindle gouge, before sanding with 320 grit and finishing with a hard wax.



Next came a square spindle section which was made from 2 varieties of wood, Box Wood and Brown Oak which Steve had previously glued together ahead of his demonstration. The piece was then roughed out using a spindle roughing gouge before finishing the form and shaping

For Sale: 2 lathes and a Printer

Further to Joe Rollings' email about a lathe for sale, a Tim Smith contacted the club wondering if anyone was interested:

"It is something that was gifted to me a number of years ago but never got around to using. It has been in dry covered storage ever since and it is now time to move it on. It may be a machine that is familiar to you as it appears to be still a fairly commonly available model.

"I'm afraid I do not know too much about it in technical terms but will try and answer any questions that you may have. To assist I attach a few photographs. It is a bench-top machine and comes with a purpose-built stand. There are also a few blanks for turning bowls etc.

"Price-wise I am open to offer on this and mostly interested in putting it in the hands of someone who will use it.

"If of interest It can be viewed in my premises in Rugby and I can be contacted either by reply to this email or contacted on 07787 566379.

Hope to hear from you when you can.

Kind Regards

Tim Smith
timothy.smith@gmx.com

There are photographs of it attached to Joe Rollings' previous email.

Malcolm Caine also has a lathe that is still for sale as detailed in the December newsletter:

Record Power DML36SH-MK2

Swivel Head.

36" between centres.
Max. dia. Over bed 9"
Max. Spindle dia. 6"
Motor: Power 430W.

Speed 1425 rpm.

Spindle speeds via belt change: 450, 950, 1500, 2000 rpm.

Headstock and tailstock bored No. 1 MT.

Headstock spindle thread 3/4" x 16 tpi.

Includes faceplates, drive centres and live centre etc.

Also includes: DML24S Leg Set.

DMLBR External Bowl Rest.

RP 4000 4 Jaw self centring chuck.

Come and see it and make me an offer.

Please contact: Malcolm Caine on 0121 353 1104

In addition there is a printer looking for a home (via Joe Rollings)

Xvico X3S 3D Printer

Compatible with all reality ender 3 range

USB plug and play with Windows PC



Pieces of Holly Available

Brian Goodall has access to some recently felled holly.

There are six pieces; the sizes are as follows (ins), and all measurements are approx:

- 1 10 dia. x 9 thick
2. 10 dia. x 8 thick
3. 8 to 15 dia. x 6 thick
4. 9 dia. x 10 thick.
5. 10 to 15 dia. x 10 thick.
6. 10 to 12 dia. x 10 thick.

Brian can make a photograph of the wood available if required.

Singles or multi-items.

The wood is not available immediately as it is in Harrogate. His next visit to Harrogate will be in January.

Please contact Brian if interested.

Acknowledgements

Many thanks to everyone who has contributed to the newsletter, particularly Chris Chambers for the photographs and Joe Rollings for the review of December's demonstration, as well as Chris Jones for the riddles.