



# West Midlands Woodturners

## Wood Turning and Wood Art

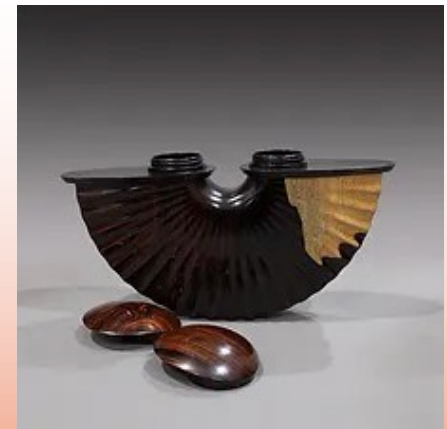
### August 2024 Newsletter

#### Programme of meetings 2024

August 18th	Demo: Jason Breach
September 15th	Hands-on: Turning finials
October 20th	Demo: Darren Breeze
November 17th	AGM; Hands-on: Using a Buffing system
December 15th	Demo: Steve Heeley

#### Jason Breach—demonstrator for August

Jason's production work includes a range of items from wooden fruit and ball clocks, functional fruit bowls and lamps, more intricate decorative artistic bowls and hollow forms. He is best known for his unique style of turned boxes and Solitaire sets that have a collection of balls each made from a different species of timber.



**Demonstration Days:** Start at 9.15 and conclude about 4.30pm

**Hands-on days** start at 9.30 and conclude around 4pm.

Venue: Kingsbury Sports and Community Centre, unless otherwise stated

West Midlands Woodturners is a "not for profit" company limited by guarantee.

Registered in England and Wales. Registration No: 9419165

# WMWT Committee

## Contents

### Page No

Chairman	Keith Lanchester	Chair@wmwoodturners.org.uk
Vice Chair	Vacant	Vice@wmwoodturners.org.uk
Directors	John Hooper Chris Jones Rob Huxley	director@wmwoodturners.org.uk
Secretary Deputy Secretary	Chris Jones Peter Flint	Secretary@wmwoodturners.org.uk
Treasurer Deputy Treasurer	Chris Chambers Vacant	Treasurer@wmwoodturners.org.uk
Programme and Events Manager	Malcolm Thorpe	Events@wmwoodturners.org.uk
Equipment Man- ager	Malcolm Edwards	Equipment@wmwoodturners.org.uk
Membership Sec- retary	David Campbell	Member- ship@wmwoodturners.org.uk
Newsletter Editor	Mary Dunne	Editor@wmwoodturners.org.uk

3	Chairman’s comments; Outside events; Pick-a-Peg
4	Chairman’s Challenges for August and September
5	Chairman’s Challenge results July 2024
6—7	July 2024 display table
8—9	Report on July hands-on day: barley twists
9	Acknowledgements

## Important reminders

### Chairman's Comments:

I'm writing this on what has turned out to be the hottest day of the year so far and have braved the heat to get the clubs kit together and loaded in my car ready for the open day at New Hall Mill this Sunday 4th August. Make sure to drop by and say hello if you're looking for something to do!

And don't forget we will be back there for the next open day on August Bank Holiday Monday, 26th.

The Hands On day last month was themed as Barley twists and it was good to see all four club lathes in use with different approaches to the theme in progress throughout the day. I must admit I didn't start my attempt at a Barley twist until after lunch as I was helping one club member with a hollowing tool problem and then convincing another club member who is left-handed that the best way to face off a blank on a screw chuck was to learn to turn right-handed. We managed some very successful cuts and he went away happy with the outcome.

I will not be at next month's demo with Jason Breach so am looking forward to reading the write-up in Septembers newsletter.

Enjoy the warm weather while it lasts,

Keith.

### Reminder:

**Please let Keith know what topics you might like to see covered on the hands-on days.**

### Outside Events 2024

August 4th New Hall Mill

August 26th New Hall Mill (Bank Holiday Monday)

Volunteers to help on the stall are very welcome! Please see Keith.

### Pick-A-Peg

**Practise your turning on items for the PICK-A-PEG. Helpers are needed for the PICK-A-PEG, particularly on 4th and 26th August at New Hall Mill. It raises significant money for club funds.**

**Items still always welcome.**

**MANY thanks to Malcolm Edwards and Dave Nash who have generously donated a large number of items which will really help with the Pick-a-Peg on 4th August.**



## WMWT Chairman's Challenge August and September

Basic

Intermediate

Advanced/Artistic

Kitchen roll holder

Thin turned and pierced piece

Wall plaque decorated and coloured

August 18th



Cup or Goblet max 150mm high

Decorative Goblet min 150mm high

Goblet with twisted or spiral stem min 150mm high

September 15th



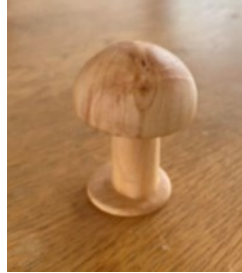
## Results of Chairman's Challenge July 2024

### Novice Group: A mushroom

1st place: Steve Hough



2nd place: Alan Underwood



3rd place: Rob Marlow



### Intermediate group: Penguin

1st place: Malcolm Edwards



2nd place: xxx



3rd place: xxx



### Advanced/Artistic group: Cowboy or top hat min 100mm diameter

1st place: Chris Chambers



2nd place: Keith Lanchester



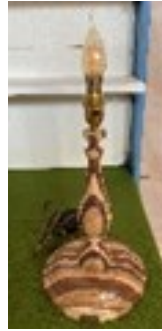
3rd place: xxx



**JULY DISPLAY TABLE**



Peter Hockley



Malcolm Edwards



Malcolm Edwards



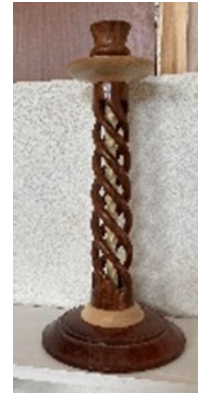
Malcolm Thorpe



Malcolm Thorpe



Malcolm Thorpe



Malcolm Thorpe

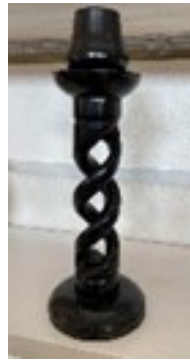


Dave Hobbs

**JULY DISPLAY TABLE**



Cliff Lane



Cliff Lane



Cliff Lane



Cliff Lane



Cliff Lane

## Report on July Hands-On day

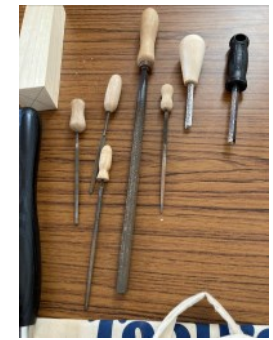
The July Hands-On day introduced members to barley twists with several experienced members having reminded themselves of the process. Keith, Chris, Peter and Malcolm T demonstrated how to mark out the twists, according to whether there would be two, three, four or more starting points and subsequent spirals. Once the blank has been rounded, a series of equally spaced rings are marked along the length of the blank. Recommended spacing should equal half the diameter of the blank, although this can be varied. Then the indexing system on the lathe was used to draw parallel lines along the length of the blank using the tool rest. Alternatively this could be done by marking the ends of the blank at two or more equal points and joining them using a ruler.

This results in a series of squares. A diagonal is drawn across each square resulting in a spiral. This is repeated according to the numbers of spirals required.

With the blank held between centres a small saw was used to cut along the lines forming each spiral in order to start the removal of timber.



A series of rasps of increasing diameter were used to remove timber, progressively increasing the depth of the spiral(s). Care had to be taken to remove material symmetrically.





Cliff recommended marking a mid-point between channels in order to ensure that the grooves remained equally spaced:



This is a relatively easy skill but time-consuming. A dremel (or similar) can be used although care needs to be taken to ensure that the burr does not “drift”. It is easier to control if the tool is pulled towards you.

The next stage was to use abrasive papers starting with fairly coarse, pulling this along the length of the roughed-out spiral to curve over the edges. This is continued until the spirals have reached the depths, widths and smoothness required.

If an “open” spiral is required, the blank is hollowed before working on the spirals.

All those who attempted a spiral were pleased with what they had learned and others said that they had been encouraged to try so here’s looking forward to seeing more of the magnificent examples that were exhibited on the display table in July.



Finally, also (reluctantly) proud of her first attempt at turning a mouse was Helen (Huxley). Despite a rather mutant-looking mouse emerging at first (“It looks more like a pig,” said Helen!!), she persevered and a mouse-like shape emerged..... ready for finishing at home. We ignored the very vulgar comments emerging!



### **Acknowledgements**

Thanks to Keith for his chairman’s comments and many thanks to those who prepared, demonstrated and supported barley twisting.